

Health And Well-being Monitor

Assessment addresses all six dimensions of health. Empowers our diverse communities to identify and address gaps in well-being.



1

Annual HWBM
Snohomish County survey
representing

800,000

residents with **456 responses**.
Data contributed to CHNA.



3

Community
HWBM surveys



2,277

Total respondents

Covid-19 Response

PIHC works with local partners to provide meaningful access to health and well-being services/resources for communities with systemic health disparities.



In partnership with the
Vaccine Equity Partnership

480

vaccines were administered
through March 2022.



100

Hygiene kits distributed to
Equity Partnership
community vaccine
clinics including **200
masks**



22,000

Covid Test Kits distributed
to low-income families in
partnership with **PRMCE**
and the **YMCA of
Snohomish County**

Vaccine distribution was
**successfully and seamlessly
fully transitioned** to the Equity
Partnership of Snohomish
County who continued to
distribute an additional

9,209

vaccines to the BIPOC
community at community events.

LiveWellLocal.org

LiveWellLocal.org is a crowd-sourced, hyper-local search tool for health and well-being resources in Snohomish County. LiveWellLocal.org makes it easy for residents to find resources that support health and healing.



2,408

current resource listings on
livewelllocal.org

5 paid ad campaigns reaching

879,455

people with resources in the
following categories:

- Mental Health
- Jobs/Training
- Housing
- Financial Assistance
- Recreation



Top Clicks

Top 3 Categories Clicked:

- 1 SECURITY AND BASIC NEEDS**
Over 5,200 clicked food assistance
Over 3,400 clicked shelter and transitional
- 2 WORK LEARNING AND GROWTH**
Over 2,700 clicked general job training
- 3 PHYSICAL HEALTH**
Over 1,300 clicked biking and hiking
over 960 clicked pools & spray parks

Top 3 Categories Clicked:

- Stanwood-Camano Custom Community
- Emergency Motel Voucher Program - Compass Health
- Stanwood-Camano Community Resource Center



34,367

website visits (48% increase)with
27,244 program views and outbound
website clicks (211% increase!)



702

active partners on the Partner
Portal, **103 new partners**
joined in 2022

Health Education & Promotion

Promoting awareness of key priority public health, health education, and prevention messages for our diverse communities. Team members are advocates and trusted resources for science-based health information, messages, and campaigns on a variety of topics.



Attended **23 community health and well-being events** reaching

28,919

people (up 23% from 2021)



7 Fieldwork students completed

280

hours of community outreach work with UW Bothell



21

event summary blog posts with **516 views**



62

partners attended Faith and Well-being Quarterly meetings, engaging with **five different local community-based presenters and organizations.**

Edge Of Amazing Conference

Connecting, educating and inspiring health and well-being advocates to enhance whole-person health and health equity.



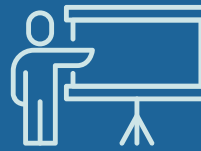
215

Attendees from **78 community partner** organizations viewed the platform **1,853 times. 11 full scholarships** were rewarded



10

health & well-being topics including 3 keynote presentations, a cooking and nutrition class, a mindfulness session, two movement classes and 5 workshops



38

Local or national speakers representing **31 local organizations**



3,882

visits to the EOA website with pages viewed **7,768 times**

PIHC General

PIHC exists to bridge the gap between traditional medical care and whole health.



PIHC Organic Facebook Posts reached

22,157

people with **1,870 engagements**



The PIHC website received

12,813

views



PIHC Newsletters reached

2,371

people.



25

Total blog posts with over **1,700 views.**

Caregiver Equity & Well-being

Launched internal NWWA Caregiver Equity and Well-being Initiative.



43

Multicultural awareness events, including **14 meals** celebrating various cultures including 4 health fairs with **398 attendees.**



10

Newsletters reached recipients **15,000 times** and were accessed over **1000 times** on the Caregiver Hub.



25

Educational presentations - like yoga classes - with **41 caregiver champions** and **22 caregiver departments engaged.**



1,219

Caregivers took the caregiver Health & Well-being Monitor